

Metformin and Your Scan

Important instructions

This handout includes instructions to follow if you:

- Take a medication that contains metformin, **and**
- Are at risk for metformin-associated lactic acidosis (GFR is less than 30), **and**
- Had a CT scan with IV contrast.



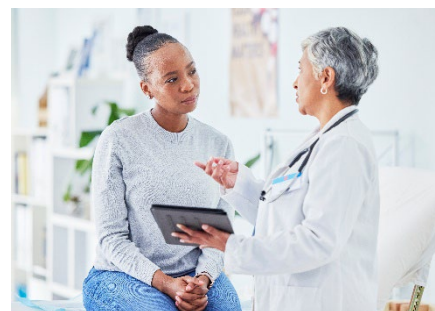
Scan for a
digital copy of
this handout.

About Lactic Acidosis

Because you take a medication that contains metformin and had a CT scan with IV contrast, you may be at risk for *metformin-associated lactic acidosis*. This is when lactate fluid builds up in your blood faster than your kidneys can remove it. This can be very dangerous and needs medical help right away.

Instructions

- A member of the radiology or radiation oncology team has checked your risk and recommends you **STOP taking your medication that contains metformin**.
- Contact your provider or care team for follow-up care. **In 48 hours (2 days), your provider or care team will re-check your risk for lactic acidosis. They will tell you when it is safe for you to restart taking your medication that contains metformin.**
- You can resume your regular activity and diet.
- Drink plenty of fluids today unless you have fluid restrictions. Do **not** drink alcohol. Drinking non-alcoholic fluids will help you pee often and clear the contrast from your kidneys.



Please talk with your provider if you have any questions about your procedure or your medicines.

When to Get Help

Contact your provider or care team if you have any problems or any of the symptoms below:

- Peeing less often
- Dark pee
- Diarrhea
- Nausea
- Swelling in the arms and legs

Questions?

Your questions are important. Call your doctor or healthcare provider if you have questions or concerns.

- ☐ **UWMC - Montlake Imaging Services:** 206.598.6200
- ☐ **UW Roosevelt Radiology:** 206.598.6868
- ☐ **Harborview Imaging Services:** 206.744.3105
- ☐ **UWMC - Northwest Imaging Services CT:** 206.668.2061